



RESILIENT SEATED GATE VALVE

Proudly Manufactured in South Africa



- LVSA's resilient seated gate valve bodies have been designed to have a straight unobstructed flow passage and inclined seat to eliminate the products (buildup) from forming inside the valve body.
- Valves are designed and manufactured in accordance to SABS 664 and SABS 665.
- The valve is bidirectional therefore it is suitable for use in pipelines where the medium may change the flow direction.
- The valve is easy to install and requires low maintenance.
- Triple o-ring design on the valve neck to prevent any media from passing to the atmosphere. The o-rings are made of rubber, embedded in non-corrosive material.
- Thrust bush and washer made of PTFE material guarantees smooth spindle operation.
- Bonnet seal is placed between the body and bonnet to prevent any media from passing to the atmosphere.
- Gate guide of wear resistant nylon with low friction coefficient is used to guarantee lowest wear and tear as well as low closing torques.
- Suitable for use with water, neutral liquids, and sewage.
- Extremely smooth surface for hygienically problem-free conditions (no depositing of mineral or organic constituents, incrustations).
- Good resistance in the presence of abrasive media.
- Cover boltings are sealed with plastic plugs to prevent water stagnation.

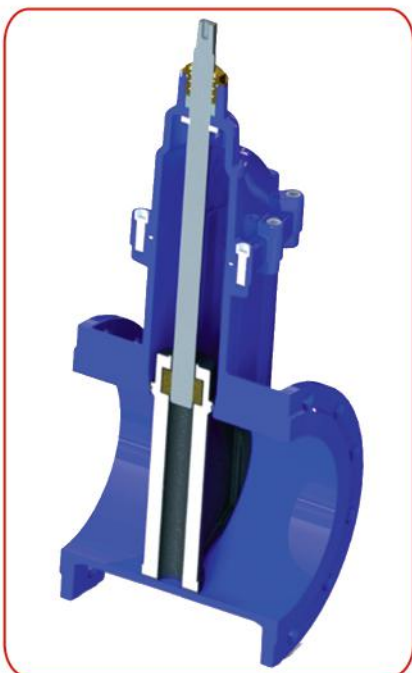


Gate valves with rising & non-rising stem design

Rising stems are fixed to the gate and they rise and lower together as the valve is operated, providing a visual indication of the valve position and making it possible to grease the stem. This type is only suitable for above-ground installation.



Non-rising stems are threaded into the gate, and rotate with the wedge rising and lowering inside the valve. They take up less vertical space since the stem is kept within the valve body. LVSA offers an option for gate valves with a factory-mounted indicator on the upper end of the stem to indicate the valve position. Gate valves with non-rising stems are suitable for both above-ground and underground installations.



Resilient Seated Gate Valves SABS 664 / SABS 665

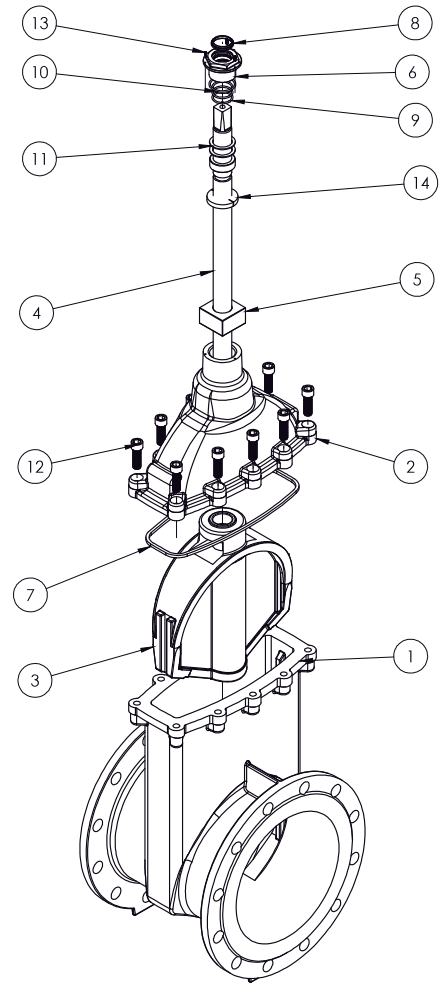


Hydro Test Details			
DN	80-1000		
Design Pressure Bar	10	16	25
Shell Test Pressure Bar	15	24	37.5
Seat Test Pressure Bar	11	18	27.5
Working Temperature °C	≤80	≤80	≤80
Medium	Water	Water	Water
Material	Ductile Iron	Ductile Iron	Ductile Iron

Rubber Lining Temperature details PN10,PN16 & PN25	
Seat / Body Liner	Temperature Range
Nitrile Rubber	-10°C to 90°C
EPDM	-10°C to 120°C
Viton	-10°C to 150°C

Material of Construction

1. BODY	:Ductile Iron
2. BONNET	:Ductile Iron
3. GATE	:Ductile Iron + EPDM
4. SPINDLE	:SS 410
5. GATE NUT	:BRASS
6. GLAND HOUSING	:BRASS
7. GASKET	:NBR
8. DUST WIPER SEAL	:NBR
9. O RING	:NBR
10. O RING	:NBR
11. FLAT WASHER	:SS 304
12. CAP SCREWS	:SS 304
13. GRUB SCREWS	:SS 304
14. WASHER	:NYLON



Designed and Manufactured in accordance to SABS 664 / SABS 665

SPECIFICATIONS

SABS 664 / SABS 665

SIZE: DN 80 - DN 1000

CLASS: PN10, PN16 & PN25

DESIGN: SABS 664 / SABS 665 / BS 5163

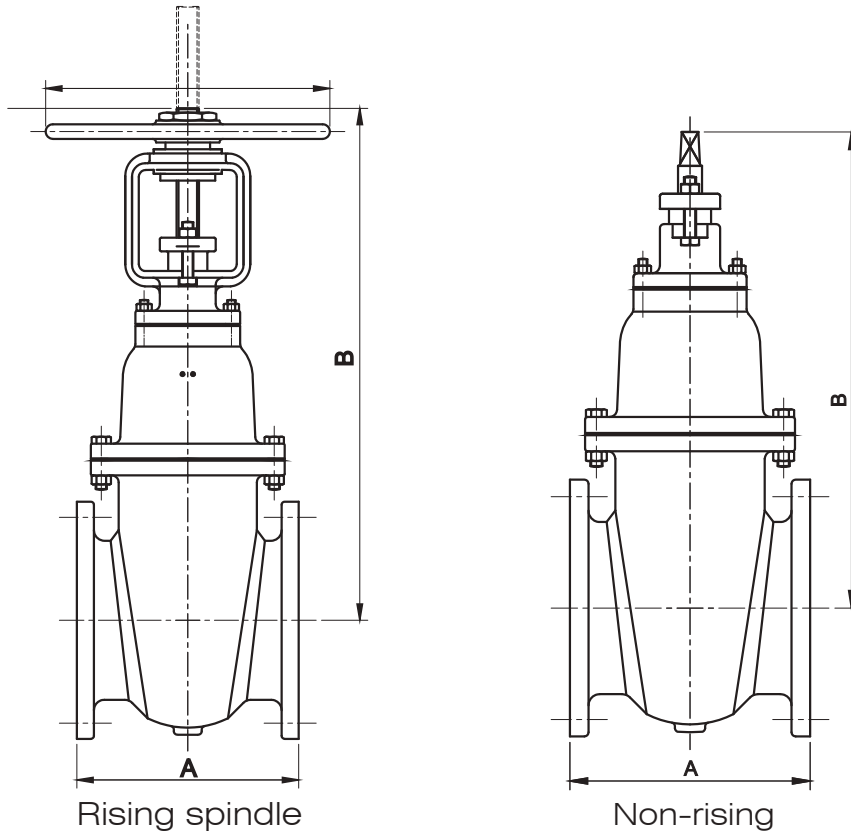
FACE TO FACE: SABS 664 / SABS 665 / EN 558

END FLANGE: SABS 1123 / EN 1092

TEST: SANS 664-3 in conjunction with SANS 664-1 / SANS 665-3 in conjunction with SANS 665-1 / EN 12266 / ISO 5208



Gate valves with rising & non-rising stem design



Flanged End (SABS 664 & 665) (PN 10,16 & 25)					
Size (DN)	Face to face (A)		Center to top (B)		
	664	665	NRS	RS (closed)	RS (open)
50	216	178	230	280	350
80	229	203	285	390	490
100	254	229	331	450	570
150	280	267	438	598	768
200	317	292	565	770	990
250	356	330	711	890	1160
300	380	356	800	1040	1360
350	470	381	810	1165	1535
400	470	406	890	1310	1730
450	485	432	975	1425	1895
500	510	457	1050	1550	2070
600	600	508	1238	1838	2458
700	610	610	1575	2275	2995
800	660	660	1688	2488	3308
900	711	711	1800	2700	3620
1000	811	811	1913	2913	3933

NRS Non- Rising Spindle

RS Rising Spindle

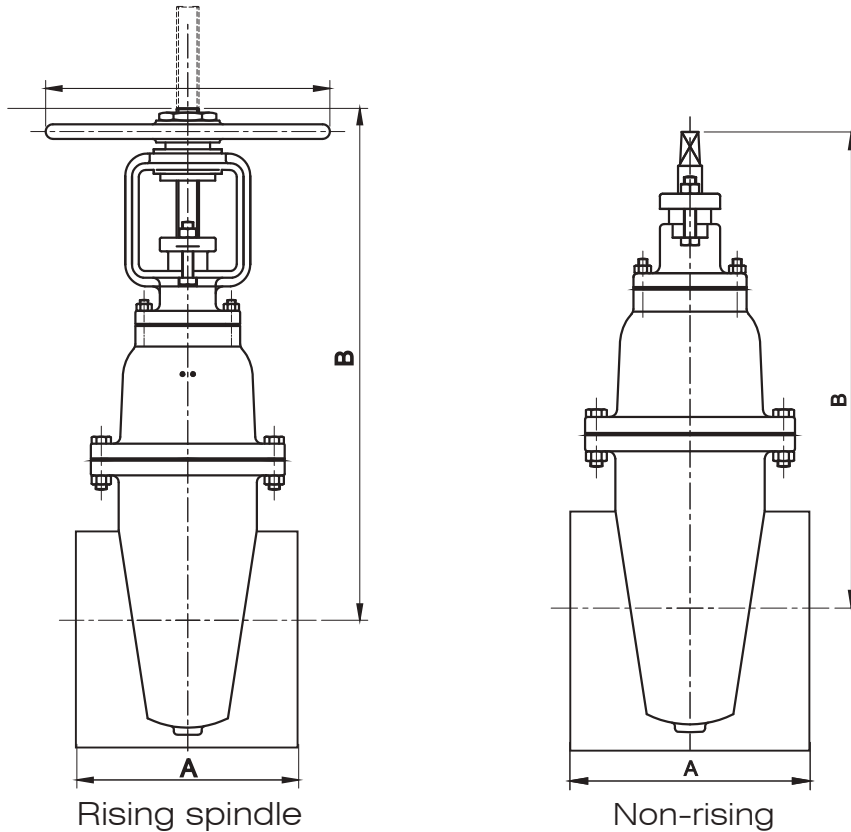
Other sizes available on request

All Dimensions in mm.

As a part of continuous improvement process, the above details are subject to change without notice.



Gate valves with rising & non-rising stem design



Spigotted End (SABS 664) (PN 10,16 & 25)				
Size (DN)	Face to face (A)	Center to top (B)		
		NRS	RS (closed)	RS (open)
50	254	230	280	350
80	280	285	390	490
100	305	331	450	570
150	362	438	598	768
200	420	565	770	990
250	470	711	890	1160
300	520	800	1040	1360
350	560	810	1165	1535
400	622	890	1310	1730
450	647	975	1425	1895
600	775	1238	1838	2458

NRS Non- Rising Spindle

RS Rising Spindle

Other sizes available on request

All Dimensions in mm.

As a part of continuous improvement process, the above details are subject to change without notice.



LVSA Valves - Johannesburg

46 Kindon Road, Robertsham, Johannesburg, South Africa, 2091.
Telephone : +27 (0) 11 680 2005
Fax: +27 (0) 11 680 2016
Email : sales@lvsagroup.co.za

LVSA Valves - Durban

8 Uitsig Road, Astra Park, Kingsburgh, Durban, South Africa.
Telephone : +27 (0) 31 914 1025
Email : kznsales@lvsagroup.co.za

LVSA Valves - Cape Town

97 Neil Hare Rd, Atlantis Industrial, Cape Town, 7349, South Africa
Telephone: +27 21 534 2451
Email : ctsales@lvsagroup.co.za

LVSA Limitada - Mozambique

Avenida Unido Africana numero 759, armazém 7,
Matola - Mozambique
Telephone: +258 83 911 1111
Email : info@lvsaco.mz

www.lvsagroup.co.za